

TRUE GRIT

Kevin Line's People of the Cotswolds

DEEPLY OBSERVED CHARCOAL PAINTINGS OF HUMAN ENDEAVOUR

27 JUNE - 5 SEPTEMBER 2026

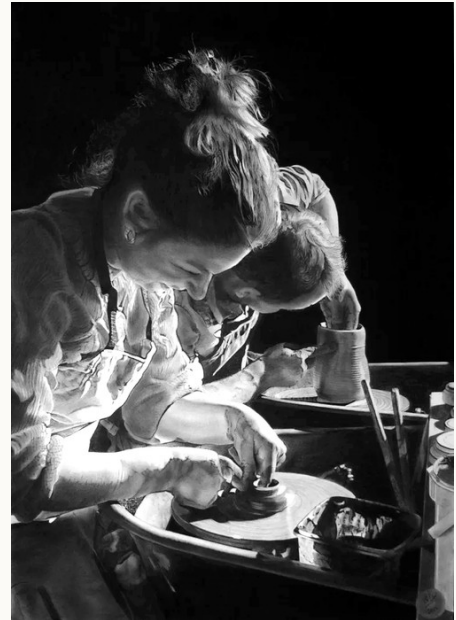
John Davies Gallery, Moreton-in-Marsh

The Cotswolds is now one of the most visible rural landscapes in the world: admired, photographed, bought, branded and mythologised.

True Grit asks us to look again.

Not at the polished surface, but at the people beneath it: makers, menders, farmers, musicians, silversmiths, cobblers, engineers, riders and working figures whose knowledge is held in the hand, the body, the tool, the instrument, the repeated task.

These are paintings about skill, but also about care. About the patience behind beauty. About the human lives that can disappear when a place becomes too perfectly packaged.



Clay Laden Fingertips
charcoal on paper, 84 x 59cm

The paintings do not polish these lives into symbols. They let them remain human - particular, weathered, skilled, private, present.



GofH Silversmith, charcoal on paper, 84 x 59cm



Hard Labour, charcoal on paper, 84 x 59cm

John Davies Gallery presents *True Grit: Kevin Line's People of the Cotswolds*, bringing together **44 charcoal paintings** by **Kevin Line PS**. It is the artist's first significant solo exhibition and runs from **27 June to 5 September 2026**. Works range from **£1,950 to £4,400**.

CHARCOAL, PATIENCE, PRESENCE

Kevin Line works in charcoal. His works are not sketches or studies, but finished charcoal paintings: slow, exacting images made through pressure, restraint and sustained attention.

The medium matters. Charcoal has weight, silence and severity. Its deepest blacks and bare-paper lights leave little room for disguise. In Line's hands, it becomes a language for labour, concentration, dignity and inward life.

THE INTELLIGENCE OF THE HAND

At the heart of the exhibition are people formed by what they do.

The Hart silversmith paintings hold the living Arts and Crafts history of Chipping Campden, where the Guild of Handicraft helped establish an enduring tradition of fine metalwork. Line does not turn that history into nostalgia. He shows it through benches, tools, lowered heads and absorbed hands: the visible intelligence of people at work.

Other paintings look beneath the beauty of the built and rural landscape. *Hard Labour* confronts the physical work behind the dressed stone of Cotswold houses - the cutting, shaping and finishing that sits behind the region's admired architecture. *The Blockley Cobbler* gives dignity to repair, wear and usefulness. *Horsework* and *Workhorse* speak of farming, routine, animal strength and human endurance.

Portraits of musicians, including violinist Michael Bochmann and harpist and composer David Watkins, show another kind of discipline: the years of practice by which music becomes held in the body as much as the mind.

BEYOND THE POSTCARD

The force of *True Grit* lies in what the paintings restore to view.

The Cotswolds is often seen now as an image of escape, taste and rural beauty. Line's paintings do not deny that beauty. They deepen it. They return weight to the place: work, memory, skill, fatigue, silence, repair, usefulness and care.

The exhibition also includes portraits of long-distance adventurer Nick Sanders MBE, sculptor Johannes von Stumm PPRSS, engineer Jim Sked, and quieter psychological works such as *I Have 400 Friends and I Am Lonely (II)*, *Shoe* and *Just Leaving*. Together, they form a serious and humane study of people shaped by practice, solitude, work and endurance.

A SIGNIFICANT SOLO EXHIBITION

Born in London in 1948, Kevin Line is a self-trained British artist who returned fully to painting and drawing in 2009 after careers in industry and garden design.

His work has been selected for and recognised by major open exhibitions and societies including the Royal West of England Academy, Royal Birmingham Society of Artists, The Pastel Society at Mall Galleries, Royal Society of British Artists, Society of Graphic Fine Art and Oxford Art Society.

True Grit brings this body of work together at a moment when its quiet insistence feels especially necessary. It is not a loud exhibition. It is a lasting one.



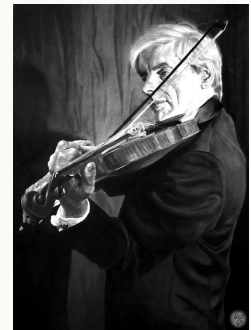
The Blockley Cobbler
charcoal on paper
84 x 59cm



Nick Sanders, Man and Machine
charcoal on paper
84 x 59cm



I Have 400 Friends and I Am Lonely (II)
charcoal on paper
84 x 59cm



Echoing Sounds of Sadness in the Soul
charcoal on paper
84 x 59cm

EXHIBITION DETAILS

True Grit: Kevin Line's People of the Cotswolds

27 June - 5 September 2026

John Davies Gallery
The Old Dairy Plant
Fosseway Business Park
The Fosseway / A429
Moreton-in-Marsh
Gloucestershire GL56 9NQ

Open Wednesday-Friday, 10.30am-4.30pm
Saturday, 10am-3pm

Works range from **£1,950 to £4,400.**

Press images

High-resolution images are available on request.

www.johndaviesgallery.com
galleries@johndaviesgallery.com
01608 652255